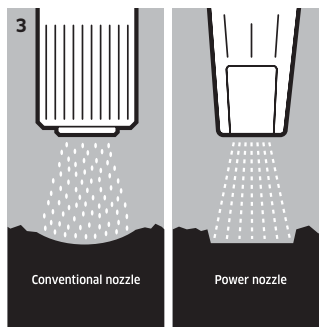
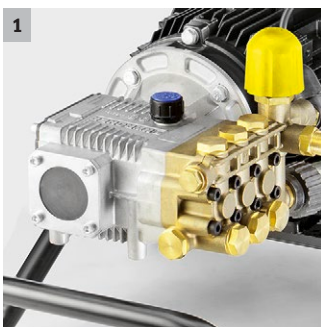




HD 9/20-4 Classic

Most powerful high-pressure cleaner of the HD Classic Range: HD 9/20-4 Classic with 900 l/h water flow, three-phase drive and crankshaft pump with ceramic piston. For long service intervals.



1 Durable and robust

- Extra large crankshafts and connecting rods with robust ball bearings.
- Ceramic pistons for reduced wear and tear.

2 Especially easy to maintain

- Wide-opening machine cover for easy access to all service and maintenance-relevant components.
- Large water fine filter for optimal protection of the pump.

3 Improved cleaning performance

- Patented Kärcher power flat jet nozzles: up to 40 percent more impact force than conventional nozzles.
- High area coverage and thorough dirt removal.

4 Excellent mobility

- Large wheels and ergonomic push handle ensure optimal turning manoeuvrability and easy handling.
- The foldable push handle enables space-saving storage.



HD 9/20-4 Classic

- Durable crankshaft pump with ceramic-coated pistons
- Large, transparent water filter
- Infinitely variable pressure regulation

Technical data

Order no.	1.367-308.0	
EAN code	4039784913233	
Current type	Ph / V / Hz	3 / 400 / 50
Flow rate	l/h	520-900
Working pressure	bar / MPa	70-200 / 7-20
Max. pressure	bar	240
Max. inlet temperature	°C	60
Connection load	kW	6.9
Weight	kg	56
Dimensions (L × W × H)	mm	709 × 469 × 1000

Equipment

Spray gun	standard	
High-pressure hose	m	10 / ID 8, 315 bar
Spray lance	mm	600
Power nozzle	■	
ANTI!Twist	-	
Pressure cut-off	■	
Servo Control	-	
Crankshaft pump with ceramic pistons	■	

■ Included in the scope of supply.

HD 9/20-4 CLASSIC

1.367-308.0

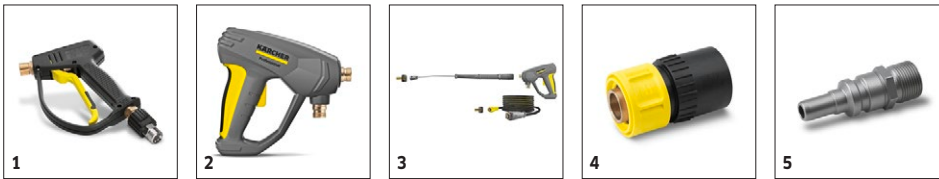


		Order no.	ID	Max. working pressure	Length		Price	Description	
Standard with unions on both sides									
High-pressure hose, 30 m, ID 8, incl. rotary coupling	1	6.390-293.0	ID 8	315 bar	30 m			To extend the operating radius with the high-pressure cleaner. Connection on both sides M22 x 1.5.	▲
High-pressure hose, 10m, DN 8	2	9.751-087.0						10m high-pressure hose (DN 8) with screw connections M 22 x 1.5 at both ends for connection to machines of the HD Classic range.	■
High-pressure hose, 10 m, ID 8, 315 bar, extension	3	6.391-342.0	ID 8	315 bar	10 m			To extend the operating radius with the high-pressure cleaner. Connection on both sides M22 x 1.5.	□
Longlife 400 with unions on both sides									
High-pressure hose Longlife 400, 15 m, ID 8, including rotary coupling	4	6.389-709.0	ID 8	400 bar	15 m			With rotary coupling, 2 x M 22 x 1.5	▲
High-pressure hose Longlife 400, 20 m, ID 8, extension	5	6.390-027.0	ID 8	400 bar	20 m			with rotary coupling, 2 x M 22 x 1.5	▲
High-pressure hose Longlife 400, 30 m, ID 8, including rotary coupling	6	6.390-294.0	ID 8	400 bar	30 m			With rotary coupling, 2 x M 22 x 1.5	▲
High-pressure hose Longlife 400, ID 8, 400 bar, 1.5 m	7	6.392-282.0	ID 8	400 bar	1.5 m			Screw connections at both ends, M 22 x 1.5, with kink protection. Dual layer steel wire reinforced.	□
High-pressure hose 1.5 m, ID 8, including connectors	8	6.390-178.0	ID 8	400 bar	1.5 m			1.5 m high-pressure hose (DN 8, M 22 x 1.5) with kink protection and connectors at both ends. For connecting to hose reels with appropriate connector (M 22 x 1.5).	□
High-pressure hose Longlife 400, 10 m, ID 8, including rotary coupling	9	6.388-083.0	ID 8	400 bar	10 m			10 m high-pressure hose Longlife 400 (DN 8) with rotary coupling, two layer high-strength steel wire reinforced. Connectors at both ends. M 22 x 1.5, with kink protection.	□

■ Included in the scope of supply. □ Available accessories. ▲ Extension hose.

HD 9/20-4 CLASSIC

1.367-308.0



		Order no.	Flow rate				Price	Description	
Trigger guns									
Standard trigger gun	1	9.751-139.0						High-pressure gun for machines of the HD Classic range. With adapter for high-pressure hoses M 22 x 1.5.	■
EASY!Force Advanced	2	4.118-005.0						Effortless, not energy-sapping: the EASY!Force high-pressure gun uses the recoil force of the high-pressure jet to reduce the holding force for the operator to zero.	□
EASY!Force conversion kit 2 - from machine	3	4.111-051.0						Developed for retrofitting existing high-pressure cleaners from Kärcher: EASY!Force conversion kit 2 with EASY!Force high-pressure gun, spray lance, high-pressure hose and necessary adapters.	□
Quick connect									
Quick coupling	4	6.401-458.0						For fast changes between different spray lances/accessories. Perfect for Kärcher spray unit, suitable for trigger gun/spray lance interface. With M 22 x 1.5 internal thread.	□
Male coupling	5	6.401-459.0						Hardened stainless steel male coupling for quick coupling 6.401-458. With M 22 x 1.5 external thread.	□

■ Included in the scope of supply. □ Available accessories. ▲ Extension hose.

HD 9/20-4 CLASSIC

1.367-308.0



		Order no.	Nozzle size				Price	Description	
Power nozzle spray angle 25°									
Power nozzle 25° - 047	1	2.883-894.0	47					Fan jet nozzle with 25° spray angle, suitable for large areas and removing stubborn dirt and stains.	■
HP nozzle spray angle 0°									
High-pressure nozzle 0° - 050	2	2.884-535.0	50					High-pressure nozzle with powerful jet for extremely stubborn dirt.	□
Power nozzle spray angle 15°									
Power nozzle 15° - 055	3	2.883-390.0	55					Fan jet nozzle with 15° spray angle suitable for stubborn dirt.	□
Power nozzle spray angle 40°									
Power nozzle 40° - 050	4	2.884-524.0	50					Power nozzle with a 40° spray angle and fan jet, suitable for large areas and sensitive surfaces.	□

■ Included in the scope of supply. □ Available accessories. ▲ Extension hose.

HD 9/20-4 CLASSIC

1.367-308.0

KÄRCHER



		Order no.	Max. working pressure	Length		Price	Description	
Rotating spray lances								
600 mm spray pipe, rotatable	1	4.760-664.0	300 bar	600 mm			600 mm stainless steel lance (manual coupling) with ergonomic handle for ease of use and protection. Rotatable 360° under pressure.	<input type="checkbox"/>
Spray lance, 840 mm, rotatable	2	4.760-663.0	300 bar	840 mm			850 mm stainless steel lance (manual coupling) with ergonomic handle for ease of use and protection. Rotatable 360° under pressure.	<input type="checkbox"/>
1050 mm spray pipe, rotatable	3	4.760-660.0	300 bar	1050 mm			1050 mm stainless steel lance (manual coupling) with ergonomic handle for ease of use and protection. Rotatable 360° under pressure.	<input type="checkbox"/>
1550 mm spray pipe, rotatable	4	4.760-661.0	300 bar	1550 mm			1550 mm stainless steel lance (manual coupling) with ergonomic handle for ease of use and protection. Rotatable 360° under pressure.	<input type="checkbox"/>
2050 mm spray pipe, rotatable	5	4.760-662.0	300 bar	2050 mm			2050 mm stainless steel lance (manual coupling) with ergonomic handle for ease of use and protection. Rotatable 360° under pressure.	<input type="checkbox"/>
Spray lance								
250 mm lance, non-rotatable	6	4.760-667.0		250 mm			250 mm stainless steel lance. With manual coupling. Non-rotatable.	<input type="checkbox"/>
550 mm lance, non-rotatable	7	4.760-665.0		550 mm			550 mm stainless steel lance. With manual coupling. Non-rotatable.	<input type="checkbox"/>
600 mm spray lance	8	9.751-140.0					600 mm long, zinc coated spray lance with hand screw connection. Not rotatable.	<input type="checkbox"/>
Angular spray lance								
Spray lance for toilets and rain gutters	9	4.760-073.0					Stainless steel lance WC and gutter with nozzle insert. Specially shaped for effective and hygienic cleaning of gutters and toilets.	<input type="checkbox"/>
Flexible spray lance								
Flexible lance 1050 mm	10	6.394-654.0	210 bar	1050 mm			1050 mm flexible lance with variable bend from 20° to 140°, ideal for cleaning difficult to reach areas, e.g. gutters.	<input type="checkbox"/>
High-pressure M18x1.5 articulated joint	11	4.481-039.0	300 bar				High-pressure articulated joint: Thanks to infinite angle adjustment up to 120°, this tool is ideal to effortlessly clean hard-to-reach areas. Simply attach to the spray lance of the pressure washer.	<input type="checkbox"/>
Telescopic spray lance								
Telescopic spray lance	12	6.394-690.0	225 bar	5400 mm			Can be continuously extended from 1.8 to 5.4 m. For cleaning areas that are difficult to reach, such as ceilings or facades. With integrated HD trigger gun, M 22 x 1.5 connection with rotary coupling. Connection for M 18 x 1.5 nozzles.	<input type="checkbox"/>
Strap for telescopic spray pipe	13	6.373-987.0					Convenient strap for relief when working with the telescopic spray lance (6.394-690). The burden is optimally distributed on the body and longer periods of use are possible.	<input type="checkbox"/>
Gutter cleaner								
Gutter cleaning lance	14	2.642-305.0					The lance is suited for cleaning of gutter systems. Because of the shape of the lance and the special nozzle the gutter can be cleaned without removing the cover plates.	<input type="checkbox"/>
Undercarriage spray lance								
Underbody lance	15	4.760-245.0		700 mm			Stainless steel lance for effective and easy underbody and wheel arch cleaning. Without high-pressure nozzle.	<input type="checkbox"/>

■ Included in the scope of supply. □ Available accessories. ▲ Extension hose.

HD 9/20-4 CLASSIC

1.367-308.0



		Order no.	Max. working pressure	Nozzle size		Price	Description	
Dirt blaster, small								
Dirt blaster - more Performance	1	4.767-233.0	180 bar	50			Full power against stubborn dirt: the new performance dirt blaster with nozzle size 050 achieves up to 50% higher cleaning and area performance than its predecessor.	<input type="checkbox"/>
Dirt blaster, large								
Dirt blaster	2	4.763-253.0	300 bar	50			The dirt blaster with rotating pencil jet offers 10 times better cleaning performance. Ceramic nozzle and bearing ring for a long service life. Further data: Max. 300 bar, 30 MPa, 85°C.	<input type="checkbox"/>
Triple nozzles								
Triple nozzle 053	3	4.767-155.0	300 bar	53			Triple nozzle with manual nozzle changeover. Convenient spray adjustment. For machines with an injector, the low-pressure flat stream is useful for cleaning agent suction and application. Connection M 18 x 1.5.	<input type="checkbox"/>

■ Included in the scope of supply. □ Available accessories. ▲ Extension hose.

HD 9/20-4 CLASSIC

1.367-308.0

KÄRCHER



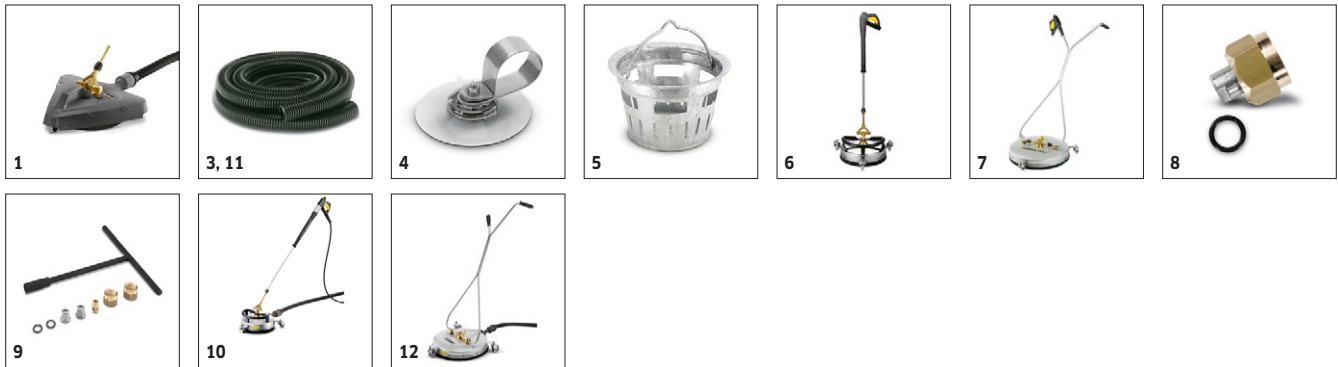
		Order no.	Max. working pressure	Nozzle size	Diameter		Price	Description	
Pipe cleaning hose, ID 6									
Pipe cleaning hose, ID 6, 10 m, max. 250 bar	1	6.110-046.0	250 bar					The 10 m pipe cleaning hose is a highly flexible high pressure hose for pipe interior cleaning (threaded connection for nozzle R 1/8).	<input type="checkbox"/>
Pipe cleaning hose, DN 6, 20 m, max. 120 bar	2	6.390-028.0	120 bar					The 20 m pipe cleaning hose is a highly flexible high pressure hose for pipe interior cleaning (threaded connection for nozzle R 1/8).	<input type="checkbox"/>
Pipe cleaning hose, ID 6, 20 m, max. 250 bar	3	6.110-008.0	250 bar						<input type="checkbox"/>
Pipe cleaning hose, DN 6, 30 m, max. 120 bar	4	6.390-029.0	120 bar					30 m flexible high-pressure hose (DN 6) for cleaning pipes (threaded connection for R 1/8 nozzle).	<input type="checkbox"/>
Pipe cleaning hose, ID 6, 30 m, max. 250 bar	5	6.110-047.0	250 bar					The 30 m pipe cleaning hose is a highly flexible high pressure hose for pipe interior cleaning (threaded connection for nozzle R 1/8).	<input type="checkbox"/>
Pipe cleaning hose, DN 6, 20 m, max. 250 bar	6	6.390-030.0	250 bar					The 20 m pipe cleaning hose is a highly flexible high pressure hose for pipe interior cleaning (threaded connection for nozzle R 1/8).	<input type="checkbox"/>
Pipe cleaning nozzle									
Pipe cleaning dirt blaster D21/060	7	4.765-002.0		60	21 mm			The forward-tilted rotating pencil jet removes the most stubborn dirt. The three backwards-tilted jets ensure the necessary forward movement, as well as convenient handling.	<input type="checkbox"/>
Pipe cleaning dirt blaster D30/060	8	4.765-005.0		60	30 mm				<input type="checkbox"/>
Pipe cleaning nozzle	9	5.763-015.0		55	16 mm			16 mm pipe cleaning nozzle with internal thread. Various jet directions for environmentally-friendly cleaning of blocked drains and pipes.	<input type="checkbox"/>
	10	5.763-016.0		60	16 mm				<input type="checkbox"/>
	11	5.763-017.0		50	30 mm				Pipe cleaning nozzle with inner thread. Different spray directions. The hose moves freely through the pipe. (R 1/8" connection, 3 x 30° backwards, diameter 30 mm.)
Rotating pipe cleaning nozzle	12	6.415-428.0		50	16 mm			Pipe cleaning nozzle with four rotating jets and inner thread. Different spray directions. The hose moves freely through the pipe. With R 1/8" connection.	<input type="checkbox"/>

■ Included in the scope of supply. □ Available accessories. ▲ Extension hose.

HD 9/20-4 CLASSIC

1.367-308.0

KÄRCHER



		Order no.	Flow rate	Nozzle size	Diameter	Price	Description	
Hard Surface Cleaner FRV 30								
FRV 30 surface cleaner	1	2.642-999.0					With the integrated and automatic suction of the dirty water, the FRV 30 makes surface cleaning even more efficient. There is no longer a need to rinse the surface after cleaning, as the dirty water can be removed through the 5m suction hose, which is supplied. Additional features include the non-marking steering rollers and double ceramic bearings. Machine specific nozzle kit must be ordered separately.	<input type="checkbox"/>
Rubber lip for FRV 30	2	2.642-910.0					For smooth floors indoors. The squeegee increases the suction performance of the FRV 30 and minimises the amount of water remaining. This means the floor is dry in just a few minutes.	<input type="checkbox"/>
Extension hose 5 m	3	4.440-939.0					5m extension hose for FRV 30. Connection sleeve included.	<input type="checkbox"/>
Hose fastening attachment kit	4	2.642-528.0					Suction cup for fixing the suction hose to smooth surfaces.	<input type="checkbox"/>
Dirt trap attachment kit	5	2.642-532.0					Galvanised steel bucket for collecting coarse dirt and for fixing the suction hose in outside areas.	<input type="checkbox"/>
FR 30 Me surface cleaner								
Hard surface cleaner FR 30 Me	6	2.640-355.0			300 mm		Hot water resistant stainless steel surface cleaner with double ceramic bearings, non-marking swivel castors and suction hose connection. Ideal for indoor cleaning, e.g. food industry.	<input type="checkbox"/>
Hard Surface Cleaner FR 50								
Hard surface cleaner FR 50	7	2.640-679.0			500 mm		Hot water resistant stainless steel surface cleaner with 500 mm working width. Ideal for large areas. With double ceramic bearings, push handle, non-marking swivel castors and detergent dosing system.	<input type="checkbox"/>
Machine-specific nozzle kits for FR								
Nozzle kit for surface cleaners	8	2.640-442.0	850-1100 l/h				Nozzle kit includes power nozzles and unions. For Kärcher surface cleaners (850 to 1100 l/h).	<input type="checkbox"/>
Machine-specific nozzle kits for FRV								
Nozzle kit 050 - for FRV	9	2.642-433.0		50			Machine-specific nozzle kit with Kärcher power nozzles and jet nozzle for FRV 30.	<input type="checkbox"/>
FRV 30 Me surface cleaner								
FRV 30 Me	10	2.642-911.0					Thanks to automatic suction of the dirty water, the stainless steel FRV 30 Me Surface Cleaner makes surface cleaning more efficient in both inside and outside areas. Hot water cleaning up to 85°C.	<input type="checkbox"/>
Extension hose FRV 30 Me and FRV 50 Me	11	4.441-040.0					5 m extension hose for FRV 30 Me. Includes connecting adapter.	<input type="checkbox"/>
Surface Cleaner FR 50 Me								
FRV 50 ME	12	2.643-598.0					Thanks to automatic suction of the waste water, the stainless steel FRV 50 Me surface cleaner makes surface cleaning more efficient in both inside and outside areas. Hot water cleaning up to 85 °C. The FRV 50 Me features a temperature-resistant 7.5 m polyurethane suction hose. Additional quality features are the non-marking steering rollers and double ceramic bearing. Machine-specific nozzle kit must be ordered separately. Max. 250 bar / 1,300 l/h / 85 °C.	<input type="checkbox"/>

■ Included in the scope of supply. □ Available accessories. ▲ Extension hose.

HD 9/20-4 CLASSIC

1.367-308.0



		Order no.	Flow rate				Price	Description	
Cup foam lance									
Cup foam lance Advanced 025	1	6.394-968.0						Short, handy foam lance with adjustable spray angle with 1 litre detergent tank. Ideal for cleaning cars due to its compact design.	<input type="checkbox"/>
Inno Foam Kit									
Inno Foam Set with detergent injector	2	2.640-151.0						High-pressure foam system with double lance (foam nozzle and high-pressure jet for rinsing). For use with mobile and stationary high-pressure and HDS pressure cleaners for cleaning or disinfection.	<input type="checkbox"/>
Easy Foam Set									
Easy Foam Set with RM injector	3	2.640-691.0						HP foam system for use with HD/HDS units for cleaning and disinfecting. Foam nozzle for connection to lance and HP chemical injector with precision 0-5% metering valve. The machine specific nozzle kit has to be ordered separately.	<input type="checkbox"/>
Nozzle kits for Inno/Easy Foam Set									
Nozzle kit 090 for Inno / Easy Set 700-1,000 l/h	4	2.640-688.0	700-1000 l/h					Nozzle kit contains Kärcher power nozzles and nozzle inserts. For Inno/Easy-Foam set 700-1000 l/h. For optimal foam system performance.	<input type="checkbox"/>
Foam nozzle mounting kit									
Foam nozzle attachment kit	5	2.637-926.0						Foaming agent kit. The foam nozzle is ideal for use in sanitary areas and the food industry and wherever long application times are necessary.	<input type="checkbox"/>

■ Included in the scope of supply. □ Available accessories. ▲ Extension hose.

HD 9/20-4 CLASSIC

1.367-308.0

KÄRCHER



		Order no.					Price	Description	
Cleaning agent injector									
Cleaning agent injector for high pressure (without nozzle)	1	3.637-170.0						Cleaning agent dosage at high pressure 3 - 5 %	<input type="checkbox"/>
Cleaning agent injector for high and low pressure (without nozzles)	2	3.637-001.0						Detergent injector for independent high and low pressure dosage. Maximum dosage about 15%.	<input type="checkbox"/>
Machine-specific nozzle kit with order no. 4.637-033.0									
Nozzle kit 750-1000 l/h	3	4.769-011.0						For HD/HDS 750 - 1000 l/h. Consists of nozzle insert + HP power nozzle + union	<input type="checkbox"/>
Nozzle kit 750-1000 l/h	4	4.769-047.0							<input type="checkbox"/>
Nozzle insert with order no. 4.637-032.0									
Nozzle insert up to 1,100 l/h - high pressure	5	4.769-003.0						Nozzle insert for detergent injector 3.637-001 for high-pressure detergent application. For high-pressure cleaners with a water flow rate up to 1100 l/h.	<input type="checkbox"/>
Nozzle insert up to 1,100 l/h - low pressure	6	4.769-001.0						For low pressure with machines up to 1.100 l/h	<input type="checkbox"/>
Rotary coupling									
Rotary coupling	7	4.401-091.0						Reliably prevents twisting of HP hoses. Connection M 22 x 1.5 m. Handle protection	<input type="checkbox"/>
Coupling									
Coupler -2 x M22 x 1,5	8	4.403-002.0						For overriding the dismantled heating coil for cleaning/alternative:4.111-029.0 adapter 1 - hose old / hose new	<input type="checkbox"/>
Connector									
Nozzle screws / screw socket	9	4.402-022.0						Nozzle connector/screw connector for connecting high-pressure nozzles and accessories to the high-pressure trigger gun (with nozzle connector). Connectors: 1x M 22 x 1.5 and 1x M 18 x 1.5.	<input type="checkbox"/>
Y distributor	10	4.405-048.0						Offers the option to connect two spray units to the machine. Installation on the high pressure outlet.	<input type="checkbox"/>
Adapters									
Sealing cone complete	11	4.424-004.0						In order to install high-pressure hose with male coupling on thread with M22 x 1.5 Alternative:4.111-032.0 Adapter 4 - Device new / Hose old Swivel	<input type="checkbox"/>
EASY!Lock adapter									
Adapter 1 M22AG-TR22AG	12	4.111-029.0						Adapter 1 to connect the old hose with the new hose	<input type="checkbox"/>
Adapter 2 M22IG-TR22AG	13	4.111-030.0						Adapter 2 to connect the old device with the new hose and the old gun with the new hose	<input type="checkbox"/>
Adapter 3 M22IG-TR22AG	14	4.111-031.0						Adapter 3 to connect the old gun with the new spray lance and new servo regulator	<input type="checkbox"/>
Adapter 5 TR22IG-M22AG	15	4.111-033.0						Adapter 5 to connect the new gun with the old spray lance and new servo regulator with the old spray lance	<input type="checkbox"/>
Adapter 6 TR22IG-M22AG	16	4.111-034.0						Adapter 6 to connect the new device with the old hose and the old hose with the new gun	<input type="checkbox"/>
Adapter 7 M18IG-TR20AG	17	4.111-035.0						Adapter 7 to connect the old spray lance with the new nozzle	<input type="checkbox"/>
Adapter 8 TR20IG-M18AG	18	4.111-036.0						Adapter 8 to connect the new spray lance with the old nozzle	<input type="checkbox"/>

■ Included in the scope of supply. □ Available accessories. ▲ Extension hose.

HD 9/20-4 CLASSIC

1.367-308.0

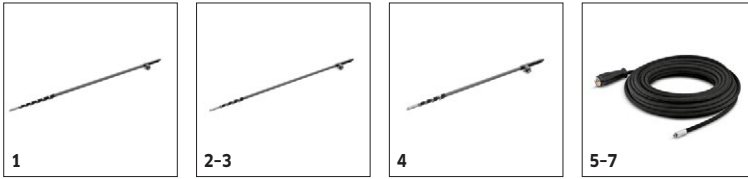


		Order no.	Length				Price	Description	
Automatic, self-winding hose reels for wall mounting									
Automatic stainless steel hose reel	1	6.392-442.0	40 m					Automatic hose reels provide the highest level of safety and convenience for winding and unwinding HP hoses. Compatible high-pressure hose, e.g. order no. 6.110-076.0 (ID 8, 40 m, 400 bar, 1x hose reel connection attachment kit).	<input type="checkbox"/>
Powder-coated swivel holder	2	2.639-931.0						Swivel holder for automatic hose reel wall mounting. For maximum action radius and flexibility of high-pressure hose. Rotatable 120°. Galvanised steel.	<input type="checkbox"/>
Stainless steel swivel holder	3	2.641-867.0						Swivelling wall bracket made of high-grade steel (for 2.641-866). This makes maximum flexibility and convenience possible when working with the HP hose.	<input type="checkbox"/>

■ Included in the scope of supply. □ Available accessories. ▲ Extension hose.

HD 9/20-4 CLASSIC

1.367-308.0



		Order no.	Flow rate	Inlet temperature	Length	Length	Price	Description	
Solar cleaning - telescopic lances									
iSolar TL 14 C (without hose)	1	4.110-002.0		max. 60 °C				Full carbon telescopic rod for maximum rigidity with minimal weight. With 14 m max. reach and practical quick-release couplings for easy extension and retraction.	<input type="checkbox"/>
iSolar TL 10 C (without hose)	2	4.110-007.0		max. 60 °C				The full carbon telescopic lance offers maximum rigidity with minimal weight. It has a reach of up to 10 m and is fitted with practical quick-release couplings - for convenient extension and retraction. The speed is regulated via ball tap, guaranteeing easy handling. For occupational safety reasons, the lowest lance element is made from a carbon-fibreglass mixture for electrical insulation.	<input type="checkbox"/>
iSolar TL 10 H (without hose)	3	4.110-003.0		max. 60 °C				Telescopic rod made from a carbon/fibreglass mixture for maximum rigidity with minimum weight. With 10 m max. reach and practical quick-release couplings for easy extension and retraction.	<input type="checkbox"/>
iSolar TL 7 H (without hose)	4	4.110-004.0		max. 60 °C				Telescopic rod made from a carbon/fibreglass mixture for maximum rigidity with minimum weight. With 7.2 m max. reach and practical quick-release couplings for easy extension and retraction.	<input type="checkbox"/>
iSolar HP hose 7	5	6.392-978.0		max. 155 °C				High-quality, flexible HP hose (with rubber covering) for the iSolar TL 7. The outer layer has especially good sliding properties when extending and retracting the telescopic rod.	<input type="checkbox"/>
iSolar HP hose 10	6	6.392-977.0		max. 155 °C				High-quality, flexible HP hose (with rubber covering) for the iSolar TL 10. The outer layer has especially good sliding properties when extending and retracting the telescopic rod.	<input type="checkbox"/>
iSolar HP hose 14	7	6.392-976.0		max. 155 °C				High-quality, flexible HP hose (with rubber covering) for the iSolar TL 14. The outer layer has especially good sliding properties when extending and retracting the telescopic rod.	<input type="checkbox"/>

■ Included in the scope of supply. □ Available accessories. ▲ Extension hose.

HD 9/20-4 CLASSIC

1.367-308.0

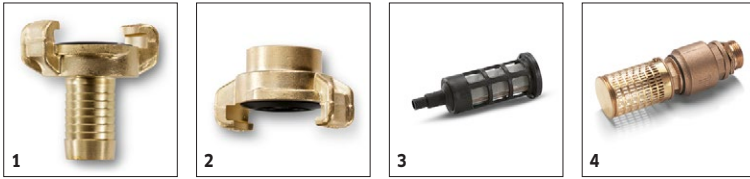


		Order no.	Nozzle size					Price	Description	
Wet blasting attachment (without nozzle)										
Wet blasting attachment with flow control (without nozzles)	1	4.762-010.0							Paint, rust and scale removal made easy: Kärcher wet blasting attachment with flow control for adding blasting abrasive to the high-pressure jet.	<input type="checkbox"/>
Wet blasting attachment without flow control (nozzles not included)	2	4.762-022.0							Paint, rust and scale removal made easy: Kärcher wet blasting attachment with flow control for adding blasting abrasive to the high-pressure jet. Without flow control.	<input type="checkbox"/>
Nozzle kits for wet jet unit										
Nozzle kit for wet jet unit 050	3	2.637-902.0	50						Nozzle kit with wet blasting nozzle and nozzle insert (type specific). For optimal Kärcher wet blasting attachment performance. Only in combination with wet blasting attachment 4.762-010/-022.	<input type="checkbox"/>
Boron carbide nozzle										
Boron carbide nozzle, for machines up to 1,000 l/h	4	6.415-084.0	6 mm						In addition to nozzle packs. Very wear-resistant nozzle with boron carbide chuck for continuous-duty operation.	<input type="checkbox"/>

■ Included in the scope of supply. □ Available accessories. ▲ Extension hose.

HD 9/20-4 CLASSIC

1.367-308.0



		Order no.		Price	Description	
Geka coupling						
Geka connector with hose barb, R 3/4"	1	6.388-455.0			with hose liner	<input type="checkbox"/>
Geka connector with inner thread, R 3/4"	2	6.388-473.0			with female thread	<input type="checkbox"/>
Suction filter						
Water suction filter	3	6.414-956.0			Suitable for ponds, storage tanks or similar. polyamide filter casing, stainless steel strainer, 800 µm mesh, R 3/4" and R 1" connection, without non-return valve	<input type="checkbox"/>
Suction filter with check valve	4	4.730-012.0			Brass suction filter suitable for ponds, storage tanks, etc. With check valve.	<input type="checkbox"/>

■ Included in the scope of supply. □ Available accessories. ▲ Extension hose.

HD 9/20-4 CLASSIC

1.367-308.0



		Order no.		Price	Description	
Water fine filter						
Water fine filter, with adapter	5	4.730-102.0			Fine-mesh water filter, 125 µm, max. temperature 50°C. Protects the high-pressure cleaner from dirt particles contained in the water. Water flow rate up to 1200 l/h. Connection 3/4", with adapter, 1".	<input type="checkbox"/>
Water supply hose						
Water supply hose	6	4.440-038.0			NW 13 R1" / R 3/4", up to 30 °C	<input type="checkbox"/>

■ Included in the scope of supply. □ Available accessories. ▲ Extension hose.

HD 9/20-4 CLASSIC

1.367-308.0



		Order no.		Price	Description	
Backflow check valve						
Backflow preventer	7	2.641-374.0			To prevent detergent getting into the drinking water cycle in case of inlet at low-pressure. - hot water resistant up to 80 °C - tested according to IEC 60335-2-79 - integrated leakage protection	<input type="checkbox"/>

■ Included in the scope of supply. □ Available accessories. ▲ Extension hose.

HD 9/20-4 CLASSIC

1.367-308.0



		Order no.	Flow rate				Price	Description	
Push-on washing brush									
Push-on wash brush	1	4.762-497.0						The wash brush is fitted directly onto the devices' new dual and triple nozzles using clamping.	<input type="checkbox"/>
Rotating washing brush									
Rotating wash brush for > 800 l/h machines	2	4.762-559.0	900-1300 l/h					Driven by water stream. Gently removes fine dust and traffic film from any surface. Temperature resistant up to 60°C, M 18 x 1.5 (replaceable brush insert).	<input type="checkbox"/>
	3	4.762-562.0	900-1300 l/h						<input type="checkbox"/>

■ Included in the scope of supply. □ Available accessories. ▲ Extension hose.