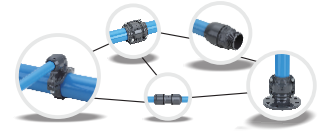


CE  
97/23/EC



 AIRpipe®



# Quick plug-in aluminum alloy compressed air piping system

## Easy & Quick To Install

- Let our business cover from compressor room to the whole factory
- Quick plug-in aluminum alloy compressor air piping system will develop rapidly in the future, just like rotary screw air compressor replaced piston type air compressor ten years ago.

### The Advantages of Airpipe Full Performance Compressed Air Piping System

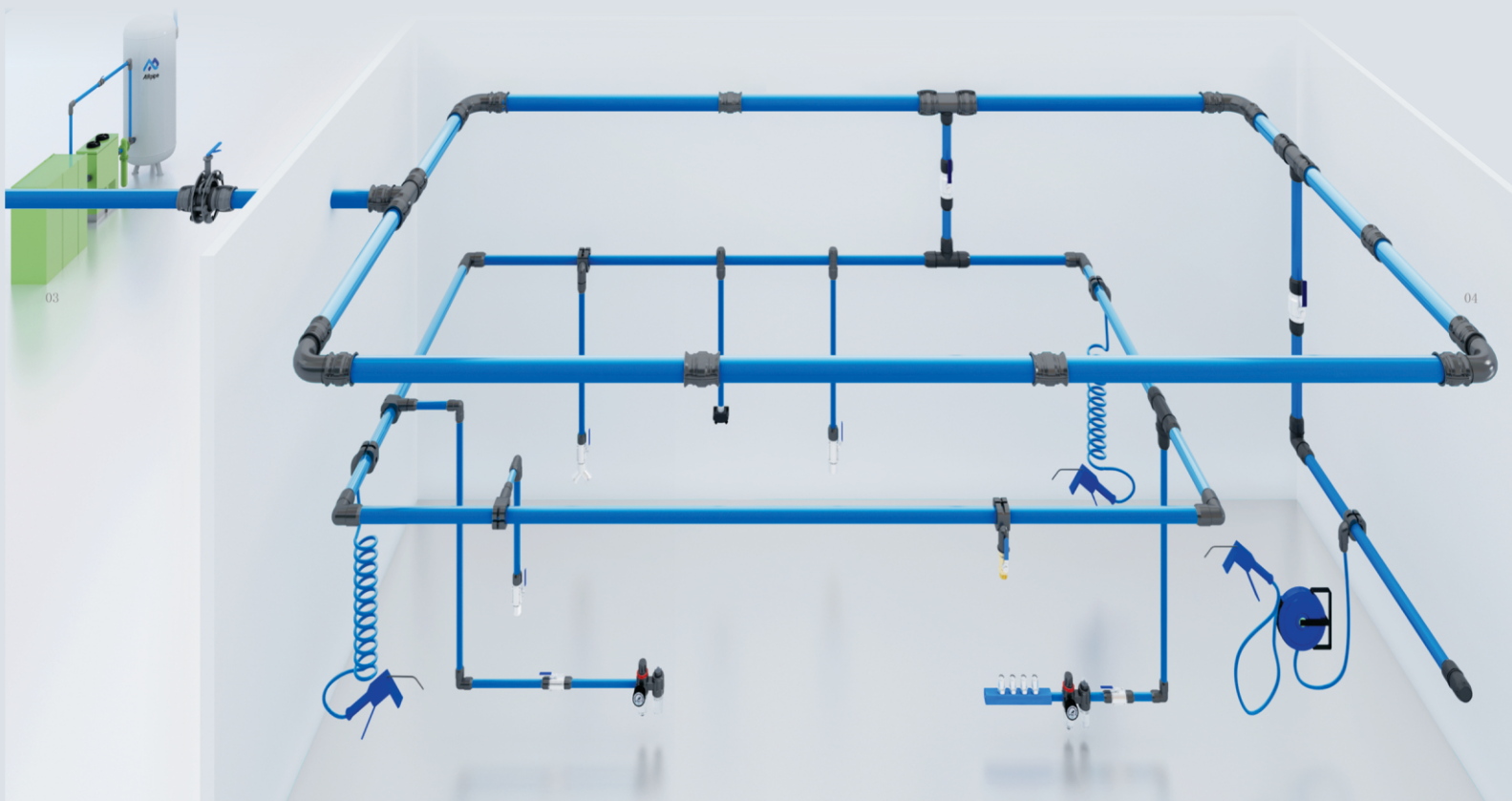
Superior  
corrosion  
resistance

Reduce  
pressure  
drop

Fast  
installation

Modular  
design

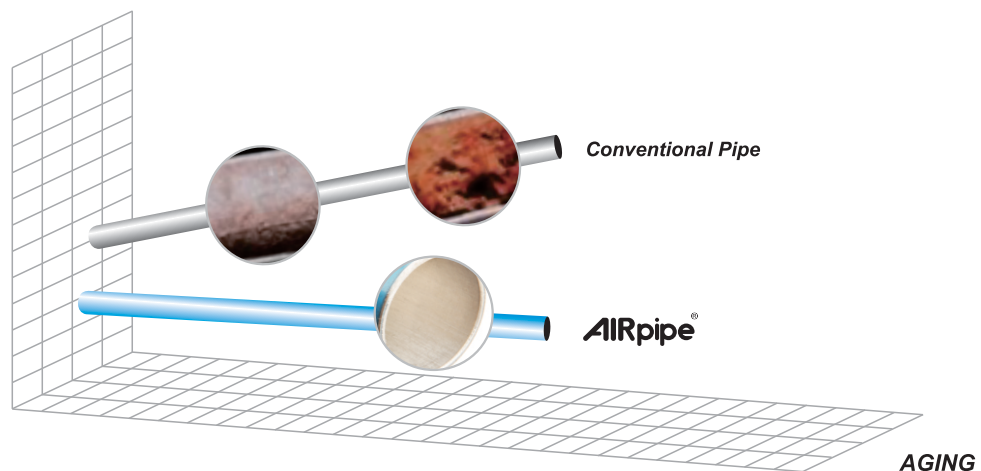
Zero  
Leakage



# CORROSION -RESISTANT

## Low Pressure Drop

- High quality and smooth inner surface will never rust. It ensures a stable flow of compressed air and guarantees the safety at the point of use.
- The high performance of "O" sealing ring ensures excellent seal and no leakage.
- Fine guide design and the low friction inner surface eliminate the airflow restriction, reducing the pressure drop as much as possible.
- Full volume flow reduces the pressure drop efficiently.



### **AIRPIPE** Technical Data

- Working Temperature: -20 °C to +70 °C
- Maximum Working Pressure: 13bar
- Vacuum: 0.13bar (ab)
- Compatible with any compressor oil
- Fireproof
- Suitable for outdoor installation

### Standards Compliance

- Seamless Aluminum Alloy Pipe
- All threads are in BSP

# TECHNICAL SPECIFICATIONS



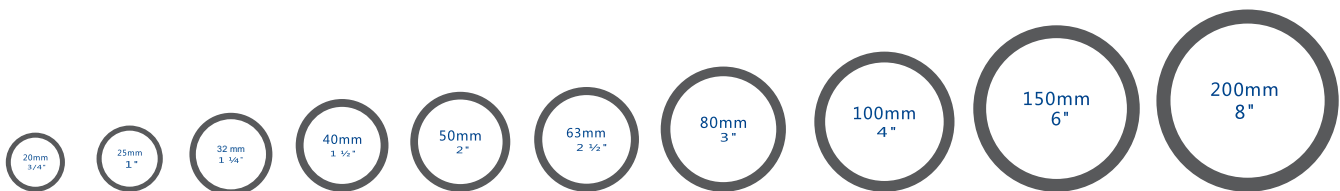
<b>AIRPIPE</b> Pipe	φ 20mm 3/4"	φ 25mm 1"	φ 40mm 1 1/2"	φ 50mm 2"	φ 63mm 2 1/2"	φ 80mm 3"	φ 100mm 4"	φ 150mm 6"	φ 200mm 8"
Blue Aluminum Pipe(3m/6m)	•	•	•	•	•	•	•	•	•
S Bend	•	•							
Tube Clip and Gasket	•	•	•	•	•	•	•	•	•



<b>AIRPIPE</b> Threaded Joint	φ 20mm 3/4"	φ 25mm 1"	φ 40mm 1 1/2"	φ 50mm 2"	φ 63mm 2 1/2"	φ 80mm 3"	φ 100mm 4"	φ 150mm 6"	φ 200mm 8"
Equal aluminum socket (male thread)	•	•	•	•	•	•			
Reducing aluminum socket (male thread)	•	•	•	•	•	•			
Equal aluminum socket (female thread)	•	•	•	•	•				
Equal aluminum socket with flange					•	•	•	•	•
Reducing aluminum socket with flange					•	•	•	•	•



<b>AIRPIPE</b> Threaded Joint	φ 20mm 3/4"	φ 25mm 1"	φ 40mm 1 1/2"	φ 50mm 2"	φ 63mm 2 1/2"	φ 80mm 3"	φ 100mm 4"	φ 150mm 6"	φ 200mm 8"
Equal socket	•	•	•	•	•	•	•	•	•
Reduction socket		•	•	•	•	•	•	•	•
90° Elbow	•	•	•	•	•	•	•	•	•
Equal Tee	•	•	•	•	•	•	•	•	•
Reducing Tee		•	•	•	•	•	•	•	•
Quick drop		•	•	•	•	•	•	•	•
Threaded quick drop		•	•	•	•	•			
Valve	•	•	•	•	•	•	•	•	•



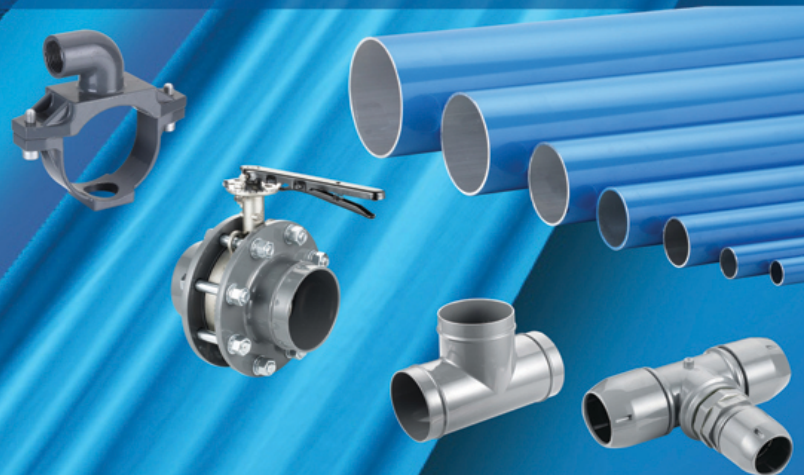
In order to make your investment the best return, we provide a large range of diameters designed to perfectly fit your system so that the piping system can keep at lowest pressure drop.



# AIRpipe Ticks All the Boxes

- A** **Aluminium** tube (supplied in single lengths) available in 3 and 6metres from 20 to 200mm dia
- I** **Installation** is flexible,quick and easy
- R** **Resistant** to corrosion,vibration and heat;the air is preserved throughout the system up to point of use
- P** **Performance** of the AIRpipe system differentiates itself through outstanding design,quality material and efficient production processes
- I** **Integration** with existing compressed air ring main systems is possible with the extensive range of pipe and fittings available
- P** **Peace** of mind knowing AIRpipe is supported with a manufacturer 10 year warranty
- E** **Energy** efficient low friction inner surface eliminates airflow restriction,reducing pressure drop

Download  
Brochure & Technical  
Information at  
[www.airpipe.in](http://www.airpipe.in)



**INSTAMOD AIRPIPE PVT.LTD.**

709, Shahpuri Tower, C-58, Janakpuri, New Delhi-110058. Tel : 011-49535588  
Email : [sales@airpipe.in](mailto:sales@airpipe.in), [santosh.kumar@airpipe.in](mailto:santosh.kumar@airpipe.in)